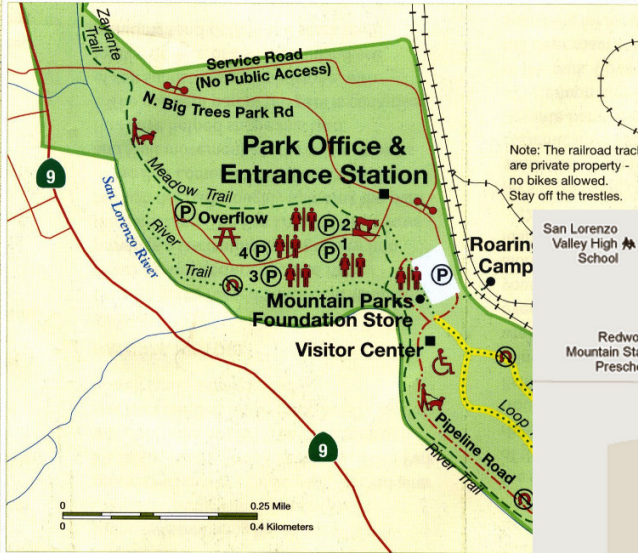
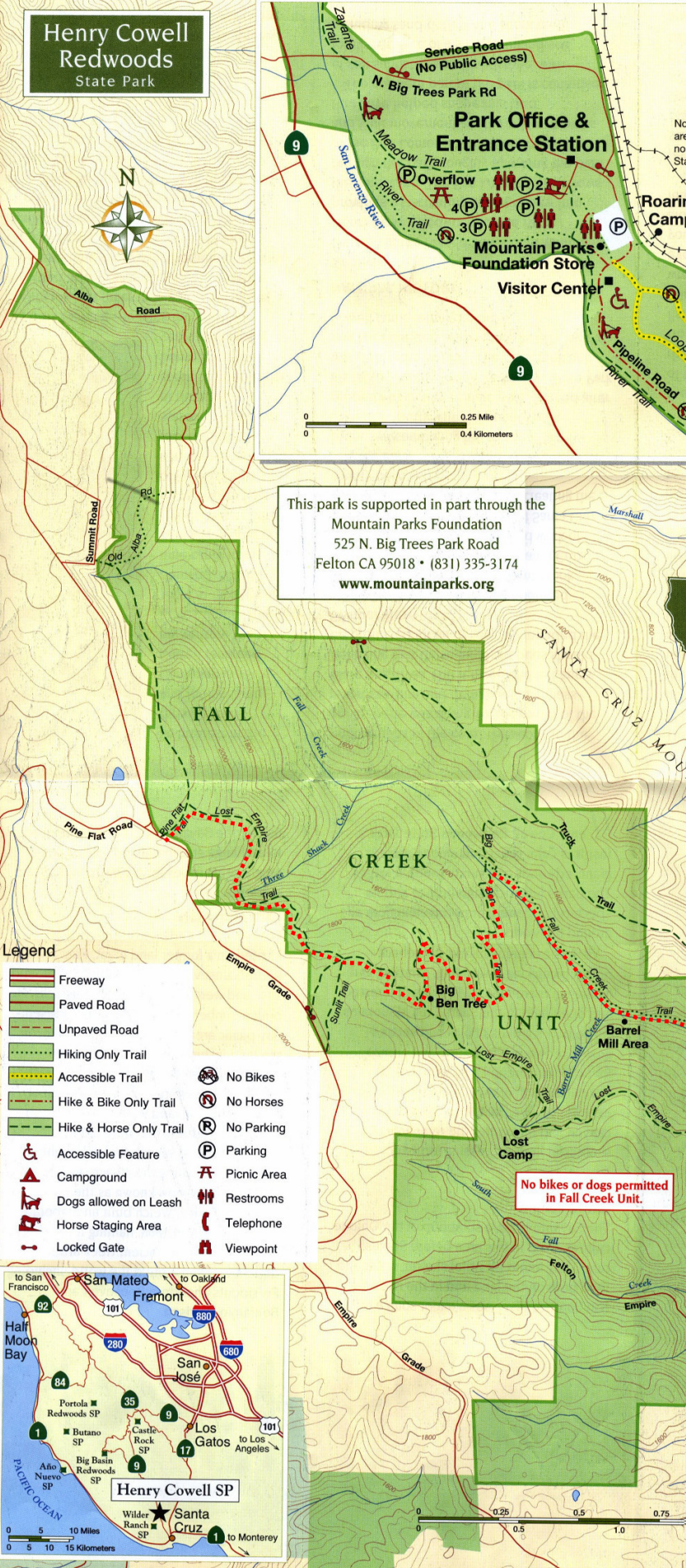


**Henry Cowell Redwoods State Park**



This park is supported in part through the Mountain Parks Foundation  
 525 N. Big Trees Park Road  
 Felton CA 95018 • (831) 335-3174  
[www.mountainparks.org](http://www.mountainparks.org)



- Legend**
- Freeway
  - Paved Road
  - Unpaved Road
  - Hiking Only Trail
  - Accessible Trail
  - Hike & Bike Only Trail
  - Hike & Horse Only Trail
  - Accessible Feature
  - Campground
  - Dogs allowed on Leash
  - Horse Staging Area
  - Locked Gate
  - No Bikes
  - No Horses
  - No Parking
  - Picnic Area
  - Restrooms
  - Telephone
  - Viewpoint

**No bikes or dogs permitted in Fall Creek Unit.**



See inset above for route to bus stop

